



VoiceGear Connect Installation Guide – Ver.3.0

| | |
|--|-----------|
| 1. OVERVIEW | 3 |
| 1.1 MINIMUM SYSTEM REQUIREMENTS..... | 3 |
| 2. INSTALLATION PROCEDURE | 4 |
| 2.1 STEP ONE | 4 |
| 2.2 STEP TWO | 4 |
| 2.3 STEP THREE | 4 |
| 2.4 STEP FOUR | 4 |
| 2.5 STEP FIVE..... | 4 |
| 2.6 STEP SIX | 5 |
| 2.7 STEP SEVEN | 6 |
| 2.8 STEP EIGHT | 6 |
| 2.9 STEP NINE | 7 |
| 2.10 STEP TEN | 8 |
| 2.11 STEP ELEVEN | 9 |
| 2.12 STEP TWELVE..... | 9 |
| 3. OBTAINING A VALID LICENSE..... | 10 |

1. Overview

This document presents a complete guide for installing VoiceGear Connect 3.0 software on existing computer systems from a bootable VoiceGear CD.

- **Estimated time to complete this installation procedure is 30 minutes.**
- **The installation procedure is fully automated, and requires only 10 minutes of your time.**
- **No expert skills are required.**

1.1 Minimum System Requirements

Before proceeding with the installation please make sure your computer and Internet connection conform to minimum requirements shown below.

CPU: Pentium 4 2.4Ghz or equivalent

Memory: 512MB DDR RAM

Hard Disk: 20GB

Network Adapter: 100Mbit

Internet Connection: DSL or Cable Internet (16Kbps/Skype call)

2. Installation Procedure

VoiceGear Connect 3.0 installation procedure is extremely easy to follow. For your convenience, the entire installation process is outlined below in 12 quick steps, which should take approximately 30 minutes to complete.

2.1 Step One

Insert VoiceGear Connect 3.0 CD into your CD-ROM drive, restart the computer and make sure your computer is set to auto-boot from CD-ROM. For analog or ISDN PBX integration, please make sure the computer has appropriate Sangoma hardware installed prior to inserting the CD.

- For analog connectivity it is recommended to use Sangoma A200 PCI cards.
- For PRI connectivity it is recommended to use Sangoma A10x ISDN cards.

2.2 Step Two

Select “Install VoiceGear Connect” from the initial “VoiceGear Installer” screen and press the “Enter” key twice to start the guided installation procedure.

2.3 Step Three

The installer will prompt you to automatically detect the keyboard layout of your system. Select “No” and press “Enter” to view the list of available keyboard origins. Select the keyboard origin that is the most appropriate for your region and press “Enter” to display the list of matching keyboard layouts. Select the keyboard layout that is the most appropriate for your region and press “Enter” to proceed with the installation. For North American installations, you can safely accept default values of “USA” for both keyboard origin and keyboard layout settings.

2.4 Step Four

The installer will prompt you to partition your hard drive in order to install VoiceGear Connect 3.0. Select the desired hard disk and press “Enter”. Installer will automatically determine partition sizes and ask for your confirmation. Select “Yes” and press “Enter” to proceed with the installation.

- **WARNING! - Proceeding with this step will completely erase existing contents of your hard drive.**

2.5 Step Five

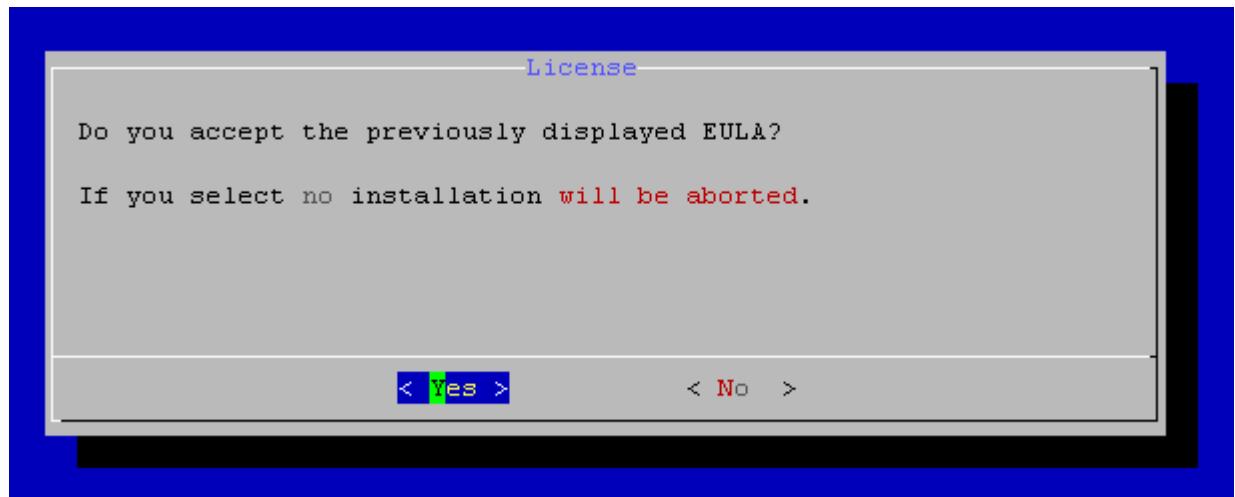
The installer will automatically reboot your system and eject the CD once it is done copying necessary data. Please make sure to remove the installation CD from the CD-ROM drive in order for installation to proceed properly. At this point, installation CD will no longer be necessary.

2.6 Step Six

The installer will ask you to read and agree to the VoiceGear EULA. To show the agreement, select “OK” and press “Enter”.

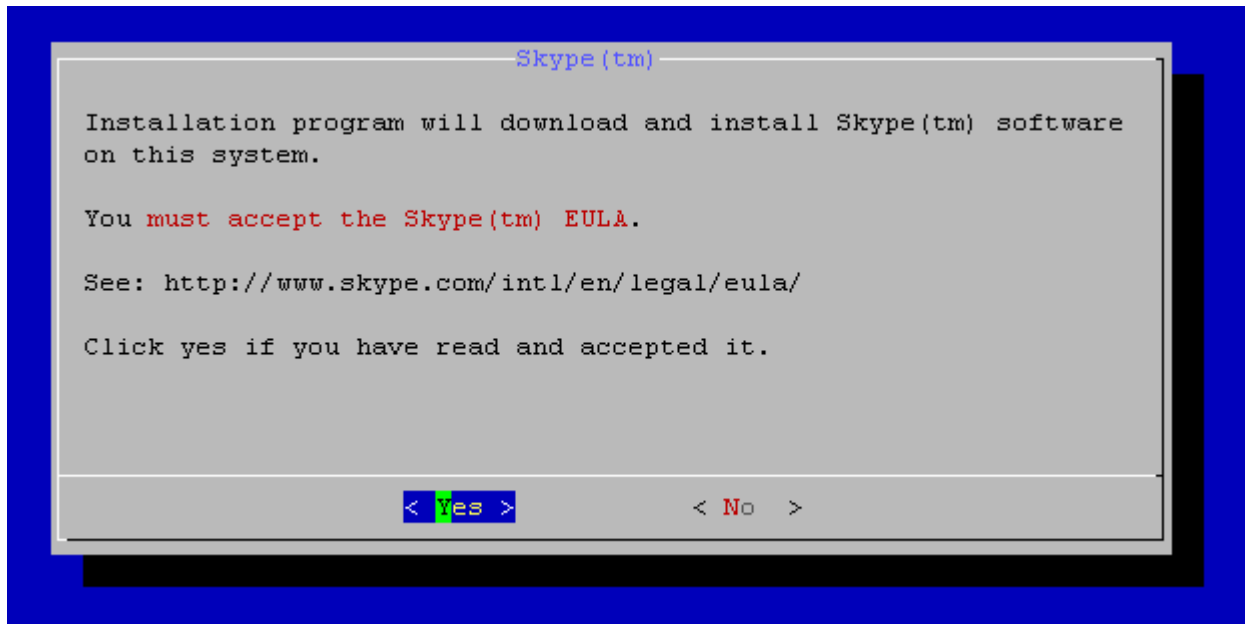


To scroll down the license agreement, press “Space” key which will show the next page of the agreement. Once done going over the EULA, select “Yes” and press “Enter” to agree with its terms and conditions. Selecting “No” and pressing “Enter” will abort the installation.



2.7 Step Seven

The installer will prompt you to read and accept the Skype EULA available online. Please navigate to the provided link, read the EULA, select “Yes” and press “Enter” to confirm that you agree with its terms and conditions. Selecting “No” and pressing “Enter” will abort the installation.



2.8 Step Eight

On the next installer screen, please select “OK” and press “Enter” to continue.

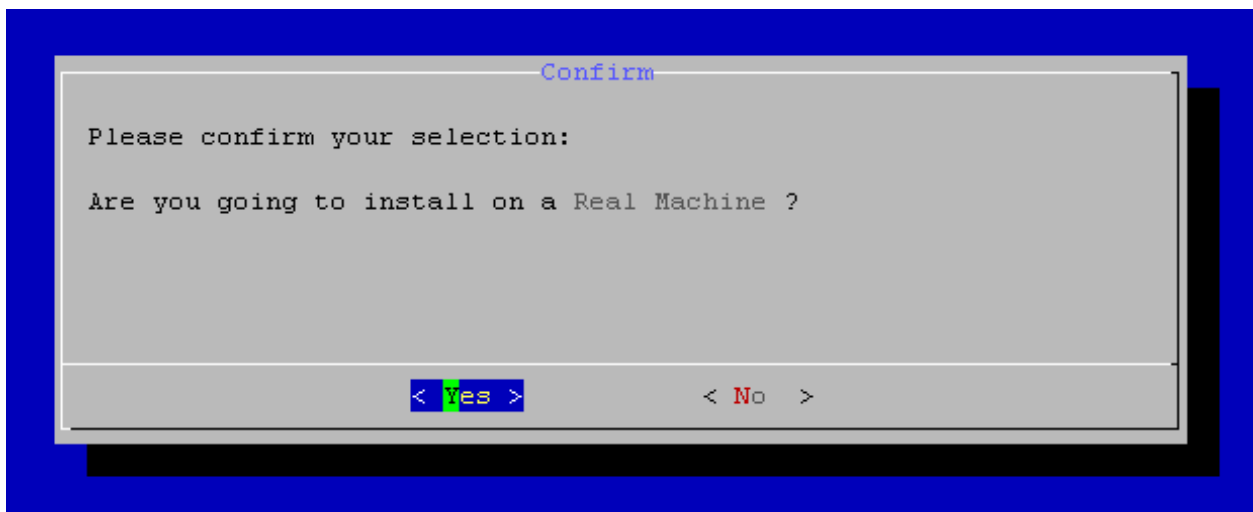


2.9 Step Nine

Depending if you are installing VoiceGear Connect 3.0 on a physical or virtual machine, you will need to select a different “System Mode” for the installation to continue.



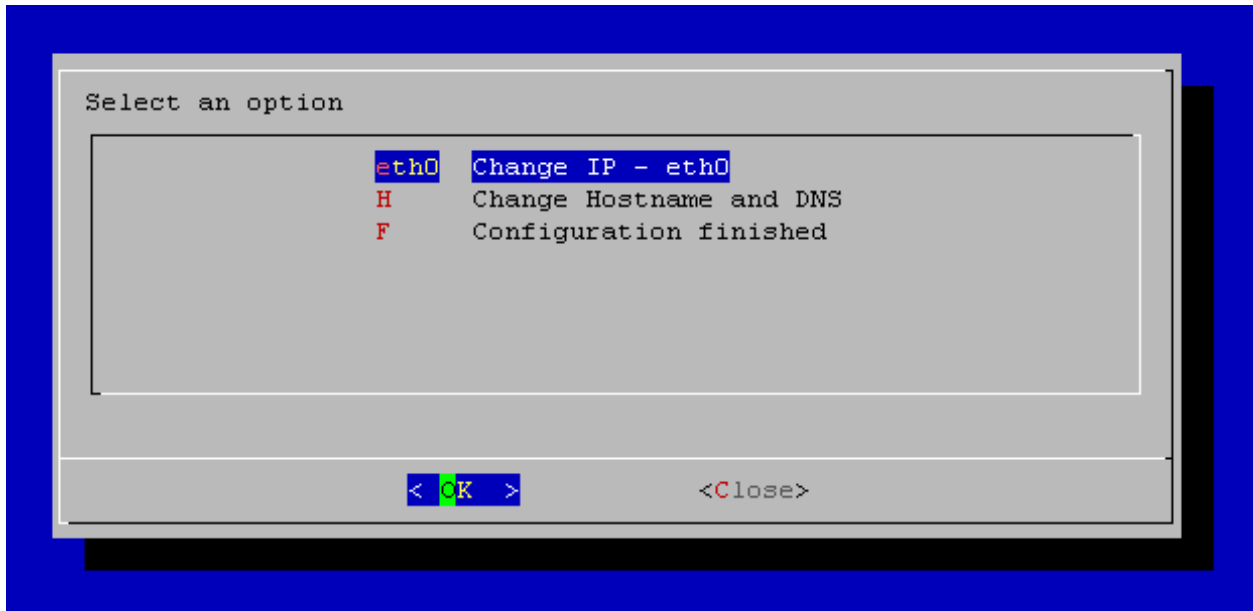
Using keyboard arrow keys and spacebar, select “real” option if installing on a physical machine or “vm” option if installing on a virtual machine such as VMWare. To proceed with the installation, select “OK” and press “Enter”. To confirm your selection, select “Yes” and press “Enter” on the next installer screen.



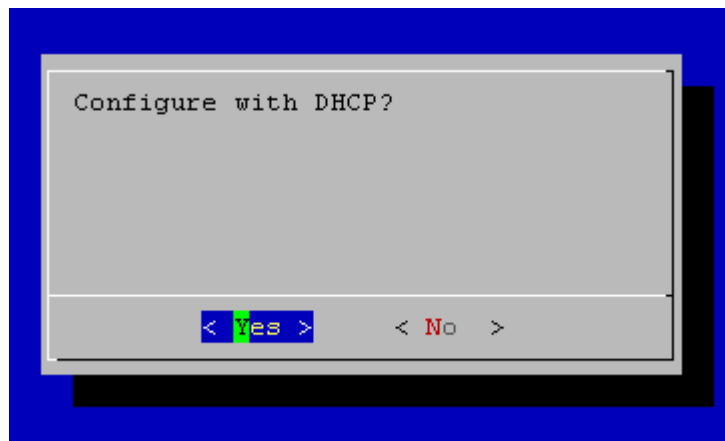
- **ATTENTION!** - It is strongly recommended to install VoiceGear Connect on a physical machine for use in production environments.

2.10 Step Ten

After processing additional system packages, the installer will auto-detect your network hardware and prompt you to configure network settings. To configure network settings, use keyboard arrow keys to select “eth0” from the list and press “Enter”.



If your network supports DHCP and is configured to lease IP addresses infinitely, select “Yes” and press “Enter” on the next screen. Alternatively, it is recommended to configure static IP information by selecting “No” and pressing “Enter” on the next screen shown below.



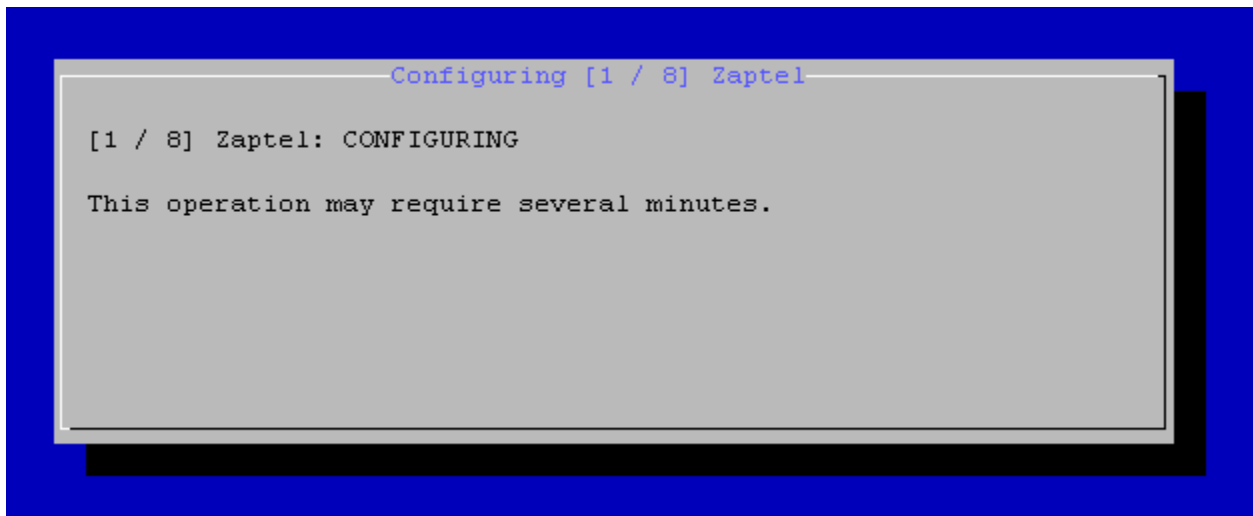
The system will prompt you to input static IP address, netmask, and gateway address in order to complete static IP configuration. As a rule, this information can be requested from a network admin.

Once finished with the static IP configuration, select “Yes” and press “Enter” to confirm your selection. To proceed with the installation, use keyboard arrow keys to select “Configuration finished” option from the list, select “OK” and press “Enter”. The installer will automatically perform a network configuration test and will proceed with the installation upon its success.

- **ATTENTION!** - Incorrect network configuration or static IP assignment will be detected by the installer and you will have an option to modify your configuration before proceeding.

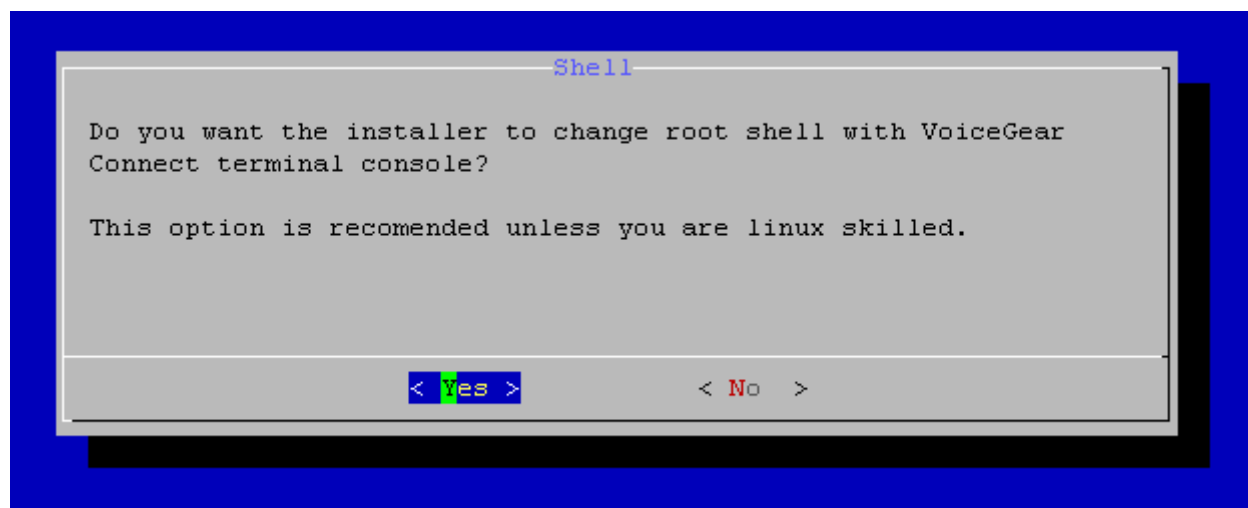
2.11 Step Eleven

Upon successful network configuration, installer will start configuring third party components which can take up to 15 minutes. The screen will be continuously updated with the current progress.



2.12 Step Twelve

When finished with third-party component configuration, the installer will prompt you to select the default shell for the system console.



It is strongly recommended to select "Yes" and press "Enter". At this point, your computer will reboot to finalize the installation.

3. Obtaining a Valid License

After the installation has been completed and the system restarts, please open a Web browser on any computer connected to the same network as the system where VoiceGear Connect has been installed and navigate to the following address: <http://0.0.0.0:8080> where “0.0.0.0” is the current IP of the VoiceGear Connect system assigned either by DHCP or manually configured in the installation step ten.

Web Site | Online Support | License | Check for updates | Buy Skype Credit

VoiceGear

Log-in Required

Enter a valid username and password

Username

Password

login


VoiceGear Connect 3.0 :: © IndustryDynamics 2006-2009

In order to login to the Web configuration interface, please use “admin” both as your username and password.







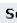
Your current VoiceGear Connect installation is a fully functional product limited to 2 concurrent calls and 60 second maximum call duration. To remove these restrictions you need to apply a valid license key, which can be requested from IndustryDynamics.

In order to obtain a valid license key, please send your License Request Code to sales@industrydynamics.ca. You can find this code by navigating to the “System->License” screen from the main menu on the left.

Web Site | Online Support | License | Check for updates | Buy Skype Credit

VoiceGear  Disconnect **admin**

System

-  Overview
-  Channel Status
-  Call Log
-  System Log
-  License
-  Updates
-  Shutdown and Reboot

Settings

- Users and Groups
- Skype™
- Address Book
- Channels
- Call Routes
- Call Filters

Product License


You are using an evaluation license

This product is fully functional with the following limitations:

- Call duration is limited to 60 seconds
- SMS are limited to 10 chars
- Chat messages are limited to 10 chars

If you already have a valid license file you can upload it by clicking "Load" button.
 If you are a new customer you can buy a license visiting the website <http://www.voicegear.ca>

Your request code is: **a5feb9cc959d620721560849c9f6f5ec** . You will be asked for this code while downloading the license file.

 Load

For more information on configuring and using VoiceGear Connect, please refer to the “VoiceGear Connect User Guide” available at <http://industrydynamics.ca/downloads.php#manuals>.

- If you require any technical assistance while installing VoiceGear Connect software, please contact our technical support team: support@industrydynamics.ca
- If you have any pre-sales questions or would like to purchase a VoiceGear Connect license, please contact our sales team: sales@industrydynamics.ca or call +1 (866) 648-1811